

Healthy Living. The System Solution



> CLEAN WALL® - Product Line

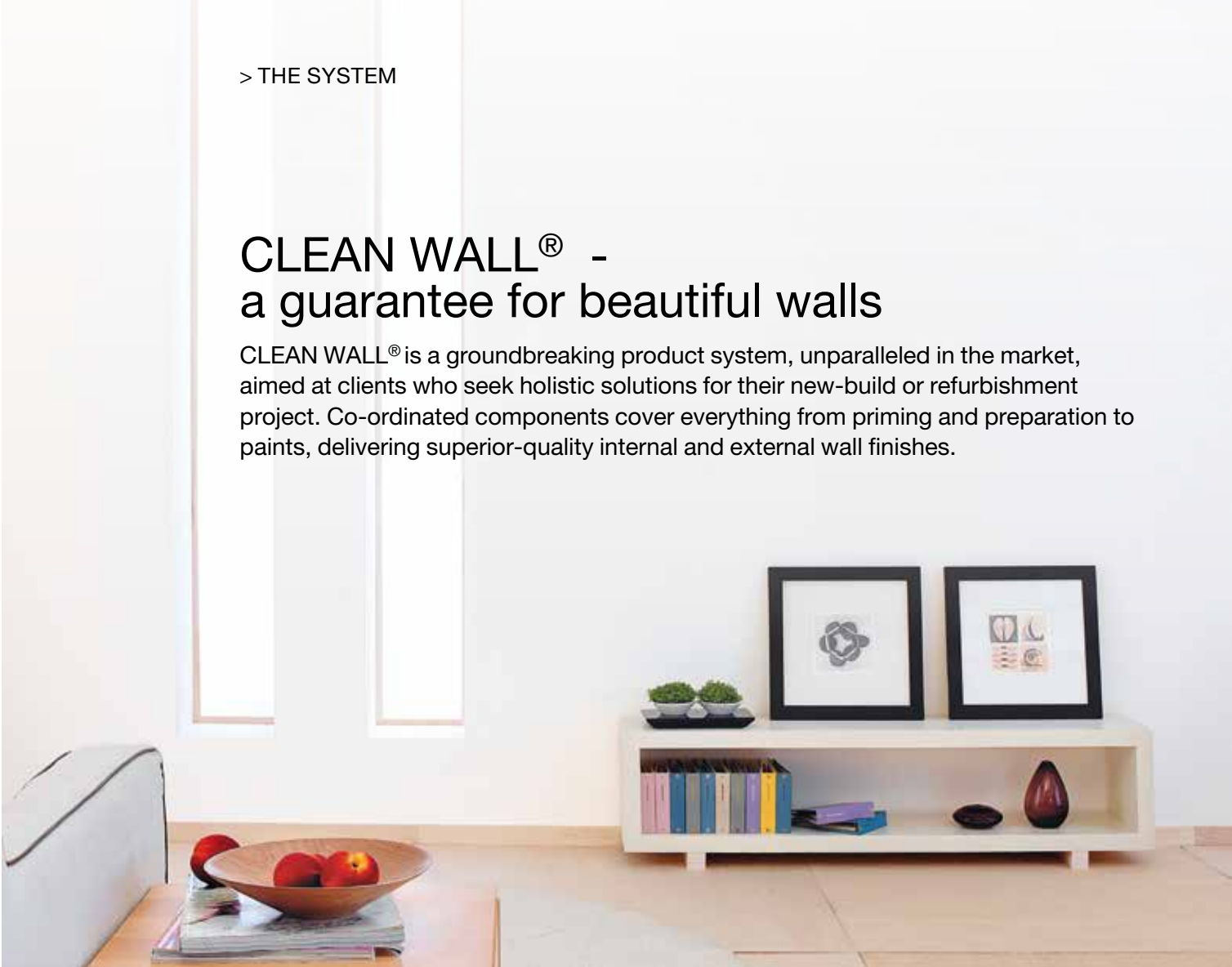
A complete system of primers, plasters, renders and paints, free from harmful additives for internal and external walls with enduring appeal



clean-wall.de

CLEAN WALL® - a guarantee for beautiful walls

CLEAN WALL® is a groundbreaking product system, unparalleled in the market, aimed at clients who seek holistic solutions for their new-build or refurbishment project. Co-ordinated components cover everything from priming and preparation to paints, delivering superior-quality internal and external wall finishes.



CLEAN WALL® - the perfect remedy against microbial growth internally and externally, creating wall surfaces with long-lasting durability and appeal

Product combinations for unbeatable performance

All key CLEAN WALL® products include CASUL®, an innovative, high-tech mineral that eliminates the need for pollutant-bearing additives in primers, plasters, renders and paints, while reliably protecting walls against mould and algae growth. The protective effect is enhanced through multi-layer application and product combinations in a system solution, producing walls with long-lasting appeal.

Benefits for applicators

The basic principle behind CLEAN WALL® lies in the single-source provision of all products needed for the wall coatings. The system is designed with individual components that complement each other and thereby magnify the protective effect. A further advantage of the system lies in its health and hygiene credentials. The products contain no preservatives, biocides, algicides or fungicides making them suitable for allergy sufferers*.

> Key CLEAN WALL® features

- Free from harmful additives while remaining highly resistant to microorganisms
- Positive impact on moisture balance in walls
- Low-emission, hygienic, food-safe and free from health risks
- No leaching of toxic substances from external walls
- No health risks caused by VOC/formaldehyde emissions from internal and external walls

* The label "suitable for allergy sufferers" does not guarantee cross-the-board tolerance of the relevant product and may not be construed as certification of a complete absence of allergy risks. Given the diverse forms taken by allergies and the specific reactions of affected persons, PROVERO/REMONDIS shall under no circumstances accept liability for any possible intolerances.

How the unique mineral CASUL® works

The outstanding characteristics of CLEAN WALL® products stem from CASUL®, the unique raw material we've developed and patented. CASUL® is a unique mineral with exceptional properties for the prevention of mould, algae and fungus growth.

A bodyguard for walls

Key features of CASUL® include its high alkalinity and 45% water crystallization content which regulates moisture absorption from the surroundings. Given that mould, algae and fungus all require a damp, acidic environment, these two properties make CASUL® the ideal agent for preventing microbial growth. The CLEAN WALL® plasters, renders and paints produced with CASUL® thus prevent the creation of favourable conditions for microbial action. This, in turn, provides effective, long-term protection for both new and refurbished walls. Specifying CLEAN WALL® also means completely dispensing with the harmful additives normally used to guard against mould and algae.

Eco-friendly in every way

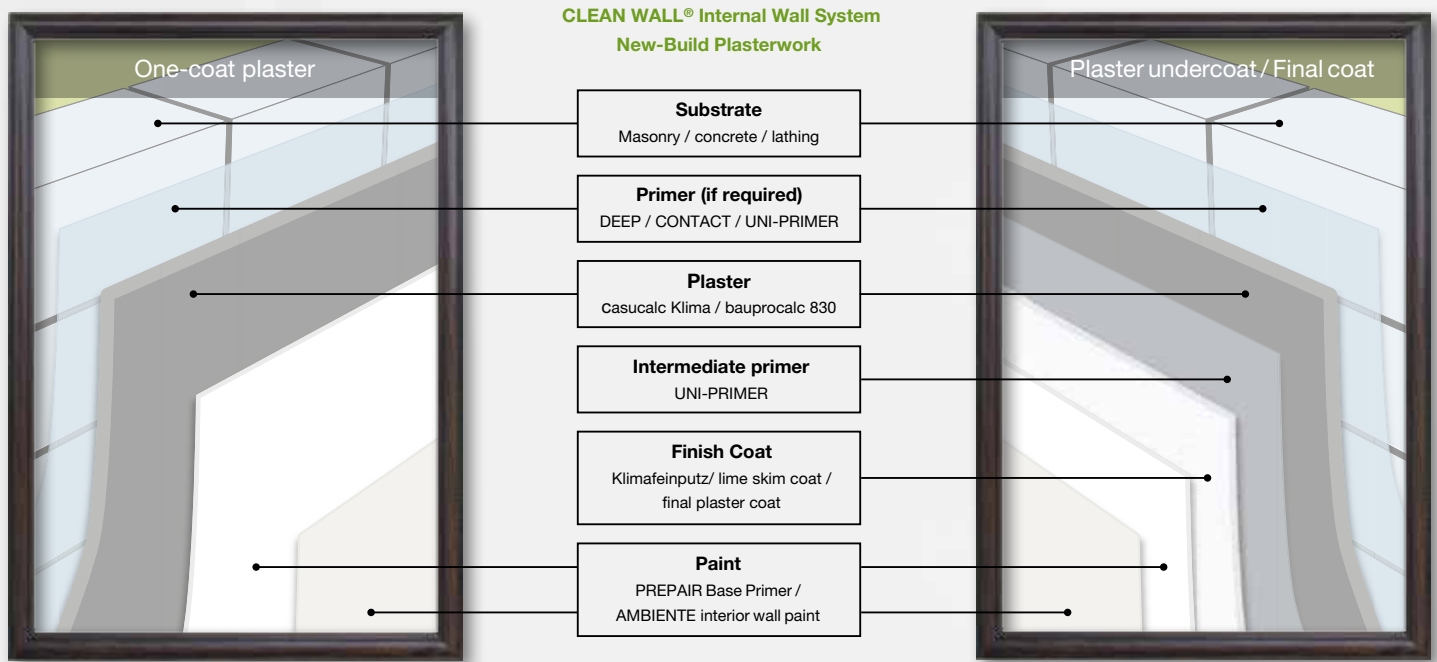
Naturally, if no pollutants are present, then nothing harmful can be released into the environment. The use of plasters, renders and paints incorporating CASUL® automatically rules out any potential problems with toxins leached from external walls or emitted from internal walls, such as those typically encountered with standard products. CASUL® thus excels by its ease of application and ecological performance, bringing considerable benefits for human and environmental safety.

CASUL® offers an eco-efficient and durable means of preventing microbial growth while eliminating the need for any further additives

The stamps of approval for the positive ecological properties of CASUL®.



Due to its very high pH value, the calcium aluminate in CASUL® is ideal for inhibiting algae discoloration.

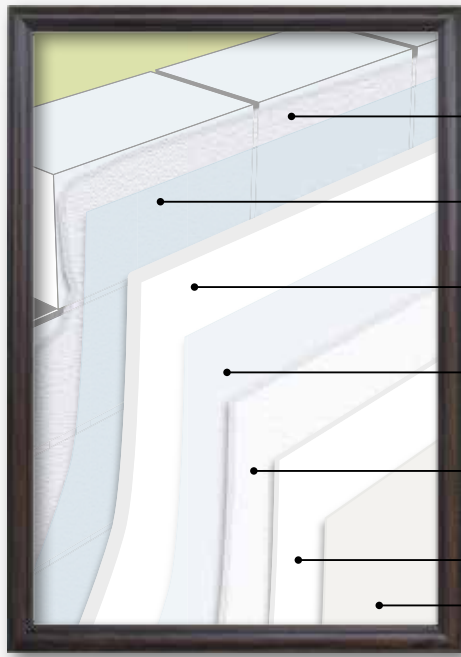


For beautiful, healthy living – now and into the future

Thanks to a wide variety of wall coatings based on co-ordinated system components, CLEAN WALL® is suitable for both new-build and refurbishment projects. The required surface finish is achieved through application of either a one-coat wall plaster or a combination of plaster undercoat and finish coat.

CLEAN WALL® - system products for internal walls - new internal wall plasterwork

Use	Product	Packaging	One-coat plaster application with finished surface texture	Two-coat plaster application with top coat as surface texture
Primer	DEEP penetrating primer	10 ltr canister	Product selection depending on background	Product selection depending on background
	UNI-PRIMER universal primer	10 ltr canister		
Base Coat	casualc Klima machine plaster	30 kg bag	Applied as felt-floated finish	Applied as undercoat
	bauprocalc 830 natural white lime render/plaster	30 kg bag		
Intermediate primer	UNI-PRIMER universal primer	10 ltr canister	Omit	✓
Finish Coat	Klimafeinputz KFP breathable fine finishing plaster	25 kg bucket	Omit	Depending on required surface texture and properties
	bauprocalc KG lime skim coat	20 kg bag		
	ESP-M mineral finish coat	25 kg bag		
	ESP-P casual fine finish coat render (paste)	25 kg bucket		
Paint	PREPAIR base primer	12.5 ltr bucket	✓	✓
	AMBIENTE interior wall paint	12.5 ltr bucket	✓	✓



CLEAN WALL® internal wall system
Refurbishment

- Substrate**
Existing plasterwork
- Primer**
DEEP
- Base Coat**
casutec FHS / SFF
- Intermediate primer**
CONTACT
- Finish Coat**
Klimafeinputz/ lime skim coat /
final plaster coat
- Paint**
PREPAIR Base Primer /
AMBIENTE interior wall paint



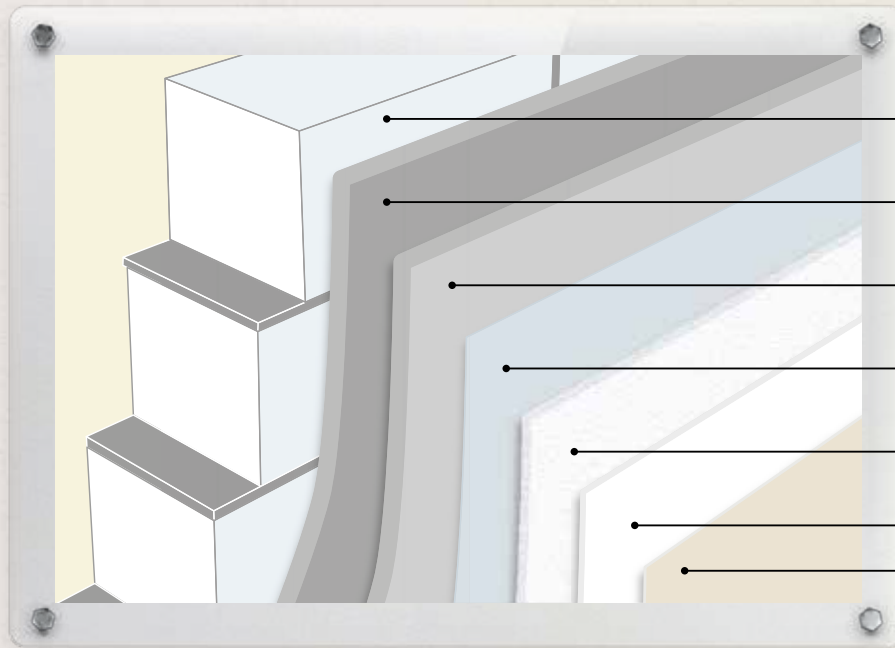
CLEAN WALL® system products for internal walls – for overcoating existing plasterwork

Use	Product	Packaging	Comments
Primer	DEEP Penetrating primer	10 ltr canister	If needed
Base Coat	casutec FHS** bonding filler	20 kg bag	If needed to level out defects
	casutec SFF** Super fill & finish gypsum filler	20 kg bag 5 kg bag	
Intermediate primer	CONTACT plaster/render primer	20 kg bucket	As adhesion promoter for coating
Finish Coat	Klimafeinputz KFP breathable fine finishing plaster	25 kg bucket	Depending on required surface texture and properties
	bauprocalc KG lime skim coat	20 kg bag	
	ESP-M mineral finish coat	25 kg bag	
	ESP-P casul fine finish coat render (paste)	25 kg bucket	
Paint	PREPAIR base primer	12.5 ltr bucket	✓
	AMBIENTE interior wall paint	12.5 ltr bucket	✓

Plastering/rendering workmanship should comply with EN 13914 and good practice. All paints are tintable in line with standard colour charts.

* With concrete surfaces or smooth-formed and low-suction backgrounds in general, application of CASEA casuprim HB or bauprocalc RHS is recommended as bonding primer.

** From the CASEA product portfolio



CLEAN WALL® external wall system

New-Build

Substrate Masonry / lathing
Lime-cement base coat bauprotec 850 M / 900 E / FLP
Reinforcing coat (if needed) bauprotec RHS with scrim
Intermediate primer UNI-PRIMER / CONTACT
Finish Coat ESP Render
Paint PREPAIR Base Primer / PROTECT facade paint

For enduring facades – for many years to come

An ideal choice for both new-build and refurbishment schemes, the CLEAN WALL® system delivers facades that retain their fresh look for years to come. It also provides long-lasting protection against discoloration through algae growth.

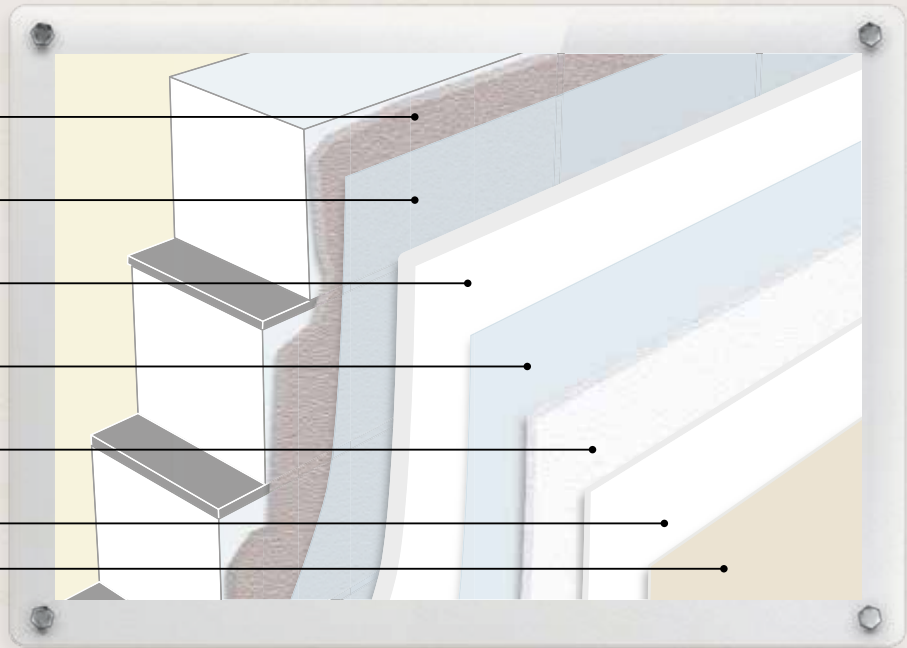


CLEAN WALL® system products for external walls – new external wall rendering

Use	Product	Packaging	Comments
Lime-cement base coat*	bauprotec 850 M ** lightweight lime cement render	30 kg bag Bulk in silo	Undercoat selection depending on masonry and requirements
	bauprotec FLP ** lightweight fibre render	30 kg bag Bulk in silo	
	bauprotec 900 E ** lightweight lime-cement render	30 kg bag Bulk in silo	
Reinforcement	Universal scrim 7x7	50 m roll	Depending on substrate and site conditions
	bauprotec RHS multi-purpose render	25 kg bag	
Intermediate primer	UNI-PRIMER universal primer	10 ltr canister	For rough backgrounds
	CONTACT plaster/render primer	20 kg bucket	For smooth backgrounds
Coating	ESP-M mineral finish coat	25 kg bag	Depending on required surface texture and properties
	ESP-P casul fine finish coat render (paste)	25 kg bucket	
Paint	PREPAIR base primer	12.5 ltr bucket	✓
	PROTECT facade paint	12.5 ltr bucket	✓

CLEAN WALL® external wall system
Refurbishment

- Substrate**
Existing render
- Primer**
DEEP
- Reinforcing coat (if needed)**
bauprotec RHS with scrim
- Intermediate primer**
UNI-PRIMER / CONTACT
- Finish Coat**
ESP Render
- Paint**
REPAIR Base Primer /
PROTECT facade paint



CLEAN WALL® system products for external walls – for overcoating existing external rendering

Use	Product	Packaging	Comments
Primer	DEEP Penetrating Primer	10 ltr canister	If needed
Base Coat Reinforcing Coat	Universal scrim 7x7	50 m roll	If needed
	bauprotec RHS multi-purpose render	25 kg bag	To level out existing rendering
Intermediate primer	UNI-PRIMER universal primer	10 ltr canister	For rough backgrounds
	CONTACT plaster/render primer	20 kg bucket	For smooth backgrounds
Finish Coat	ESP-M mineral finish coat	25 kg bag	Depending on required surface texture and properties
	ESP-P casul fine finish coat render (paste)	25 kg bucket	
Paint	PREPAIR base primer	12.5 ltr bucket	✓
	PROTECT facade paint	12.5 ltr bucket	✓

Plastering/rendering workmanship should comply with EN 13914 and good practice. All paints are tintable in line with standard colour charts.

* With concrete surfaces or smooth-formed and low-suction backgrounds in general, application of CASEA bauprotec RHS is recommended as bonding primer.

** From the CASEA product portfolio.

smet[®]

 **CLEAN WALL[®]**

**CLEAN WALL[®] is part of the
REMONDIS Group.**

bringing european innovation

smet[®]

FOR MORE INFORMATION CONTACT: Smet Building Products Ltd

93A Belfast Road | Newry | BT34 1QH | Northern Ireland

T: +44 (0) 28 3026 6833 | F: +44 (0) 28 3026 7619

E: info@smetbuildingproducts.com

www.smetbuildingproducts.com or www.smet.ie