



# Sopro DB 438

## Sealing tape

- 438 Sealing tape
- 014 Sealing tape/  
int. angles
- 015 Sealing tape/  
ext. angles

# Sopro DE 014/015

## Sealing tape for internal/external angles



System-tested, highly elastic, nonwoven-backed sealing tape for flexible, trouble-free waterproofing of perimeter and movement joints, and elastic fittings for durable sealing at internal and external angles, for use in conjunction with liquid-applied Sopro waterproof membranes below ceramic coverings.

- For indoor and outdoor use
- Flexible expansion zone
- Guarantees strong bond
- Alkali-resistant
- Water- and weather-resistant
- For use in conjunction with Sopro waterproof membranes
- With printed scale for extra convenience
- EMICODE system of GEV (German Association for the Control of Emissions in Products for Flooring Installation, Adhesives and Building Materials): EC1<sup>PLUS</sup> ("very-low-emission-plus") rating
- DGNB (German Sustainable Building Council): Top quality level 4, Line 9<sup>1)</sup>

### Use

For flexible, trouble-free waterproofing of perimeter and movement joints below ceramic coverings, in conjunction with composite waterproofing systems with membrane and tile finish. Used as ancillary products for waterproof membranes comprising:

- Sopro TDS 823 two-component turbo sealing slurry
- Sopro DSF 523 one-component flexible sealing slurry
- Sopro DSF 623 one-component flexible rapid-set sealing slurry
- Sopro DSF 423 two-component flexible sealing slurry
- Sopro ZR 618 reactive waterproof membrane
- Sopro FDF 525/527 flexible sealing compound
- Sopro PU-FD 570/571 surface sealant for walls/floors

### Packaging

**Sopro DB 438:**  
50 m roll (150 cm wide)  
50 m roll (120 cm wide)  
10 m roll (120 cm wide)  
50 m roll (100 cm wide)

**Sopro DE 014/015:**  
As single items

<sup>1)</sup> Based on DGNB (German Sustainable Building Council) criterion "ENV1.2 Local Environmental Impact" (2015 version).

## Properties

### Sopro DB 438

Expansible, nonwoven-backed, high-performance sealing tape with extra-high alkali resistance for flexible, trouble-free waterproofing of perimeter and movement joints. Guarantees strong bond with Sopro waterproofing systems. Easy bedding of sealing tape due to flexible expansion zone. Sopro DB 438 accommodates expansion and seals perimeter and movement joints against surface water infiltration. It is alkali-, water- and weather-resistant.

### Sopro DE 014/015

Alkali-resistant, preformed angles made from Sopro DB 438 sealing tape for flexible, trouble-free waterproofing of perimeter and movement joints at internal/external angles. Installed in conjunction with Sopro DB 438 sealing tape or Sopro DBF 638 pre-folded sealing tape.

## Application

Apply selected waterproof membrane material up to approx. 10 mm from edge of perimeter or movement joint. Place Sopro DB 438 over middle of joint and gently press down so as to form as nearly as possible a right angle.

Bed free nonwoven edges in fresh waterproof membrane material. When placing following coat of membrane material, completely overcoat Sopro DB 438 with two coats in required thickness.

Use of Sopro DE 014/015 sealing tape fittings is recommended at corners, internal and external angles. Provide min. 5 cm lap at end joints between lengths of sealing tape.

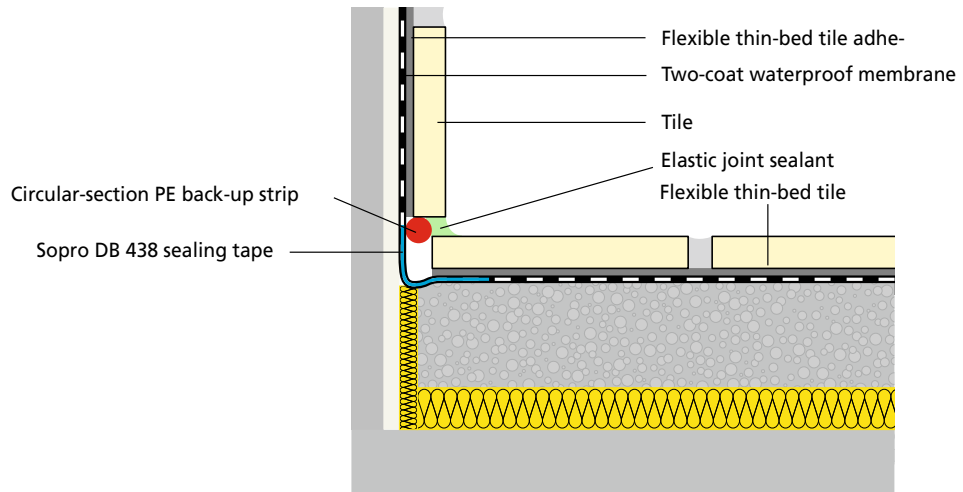
For swimming pool or underwater applications, please contact our Technical Service team.

**Note on bonding at joints:** A reactive, two-component Sopro sealing slurry or (MS polymer-based) Sopro sealing adhesive should be used to bond sealing tape and fittings.

Moreover, under DIN 18534, tape and fittings shall always be subsequently overcoated over full surface and beyond edges with waterproof membrane.

For one-component Sopro sealing slurries and Sopro FDF flexible sealing compound, a minimum drying time of 28 days shall be ensured. In case of shorter construction windows or unfavourable weather conditions on site (e.g. cool or damp weather), then only a reactive, two-component Sopro sealing slurry or (MS polymer-based) Sopro sealing adhesive shall be used.

**All suitable Sopro products for standards-compliant application are listed under "Test certificates". Please observe technical product information for relevant system products!**



## Test certificates, test reports and licences

### PG-AIV-F

National test certificate (abP) for composite waterproofing systems with membrane and tile finish, for structural waterproofing in conjunction with Sopro DSF 523, DSF 623, DSF 423, TDS 823, ZR 618, FDF 525/527, PU-FD 570/571 and other Sopro components.

### PG-MDS

National test certificate (abP) for structural waterproofing in conjunction with Sopro TDS 823, ZR 618 and other Sopro components.

### EMICODE (system of GEV)

EC1<sup>PLUS</sup> ("very-low-emission-plus") rating

## Safety precautions

Exempt from labelling requirements under Regulation (EC) No 1272/2008 (CLP).

All standard precautions for the handling of construction materials/chemicals shall be taken.

**Precautionary statements:** P102 Keep out of reach of children. P332+P313 If skin irritation occurs: Get medical advice/attention.

bringing european innovation

# smet

FOR MORE INFORMATION CONTACT: Smet Building Products Ltd

93A Belfast Road | Newry | BT34 1QH | Northern Ireland

T: +44 (0)28 3026 6833 ROI: +353 (0) 1697 8586

E: info@smetbuildingproducts.com

smetbuildingproducts.com or smet.ie



Marketplace+

The information, and, in particular, the recommendations relating to the application and end-use of SMET distributed products, are given in good faith based on SMET's current knowledge and experience of the products when properly stored, handled and applied under normal conditions in accordance with the manufacturer's recommendations. In practice, the differences in materials, substrates and actual site conditions are such that no warranty in respect of merchantability or of fitness for a particular purpose, nor any liability arising out of any legal relationship whatsoever, can be inferred either from this information, or from any written recommendations, or from any other advice offered. The user of the product must test the product's suitability for the intended application and purpose. The manufacturer reserves the right to change the properties of its products. The proprietary rights of third parties must be observed. All orders are accepted subject to our current terms of sale and delivery. Users must always refer to the most recent issue of the local Product Data Sheet for the product concerned, copies of which will be supplied on request.